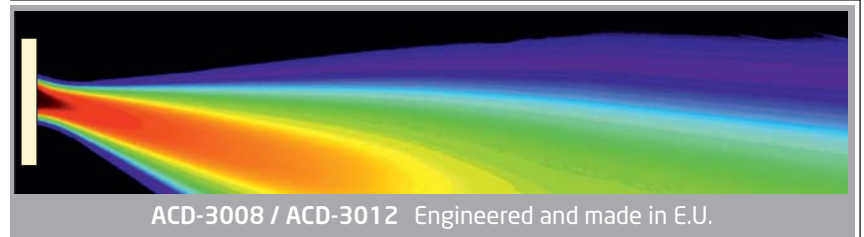


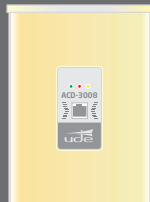
## DSP ACTIVE LINE ARRAY SPEAKER



ACD-3012



ACD-3008



### MAIN FEATURES

- Uniform coverage within the listening area
- Adjustable sound beam
- Line level (0 dB) input/output. (XLR)
- Input from loudspeakers line ( Terminals ):
  - High impedance: L100V/L70V
  - Low impedance: 4 - 8 ohms
- Sensitivity adjustment: 0 dB / -3 dB / -6 dB
- VOX detection for automatic power switch.
- Tone control: Bass & treble.
- Volume control.
- 15 band graphic equalizer.
- Speech filter for increasing intelligibility.
- Mute option.
- Use for indoor and outdoor applications.

### DESCRIPTION

The ACD-3008 / ACD-3012 has been designed and constructed as a high quality LINE ARRAY with 4" loudspeakers. The new audio algorithms for digital signal processor developed by UNION DESARROLLOS ELECTRONICOS and implemented, allow modifying the sound diffusion, adapting the response to the acoustical requirements of the installation.

The line array has an internal DSP and microcontroller where audio signals are processed. The DSP has a 100dB SNR and 50 MIPS. The line array increases new functionalities in comparison with the old passive columns, giving better performance for example in vertical dispersion control and secondary lobes, thanks to the new class D amplifiers reaching 240 W / 360 W RMS.

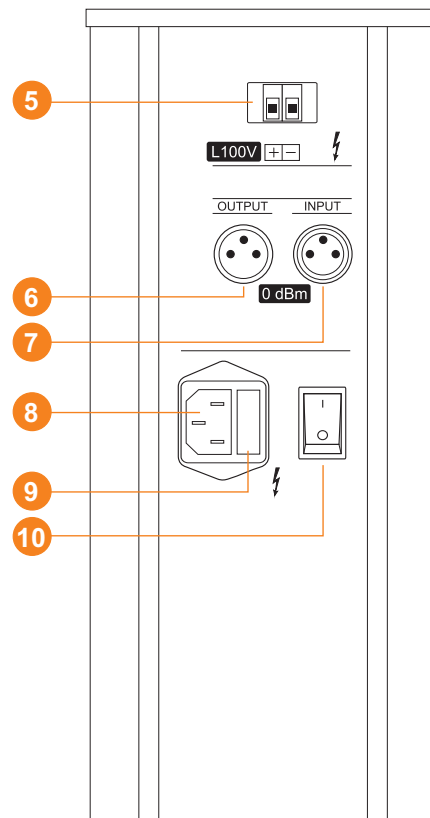
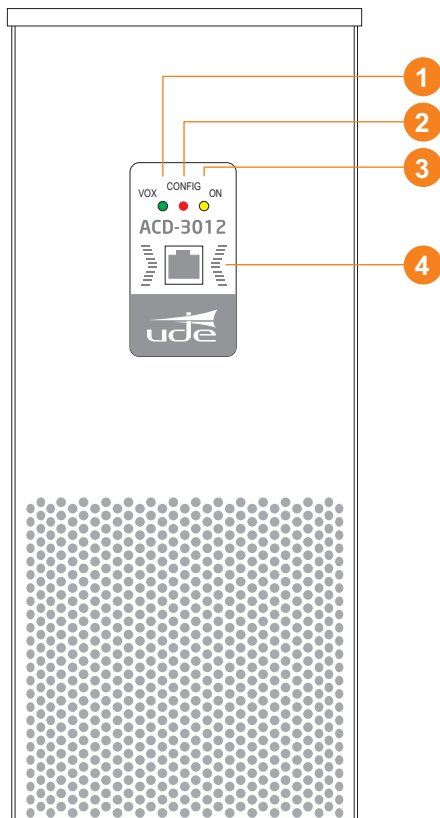
LINE ARRAY is really useful and versatile for reverberant and complex acoustic installations (like churches, sport centre, big halls, etc.) In the power consumption side the line array has been designed for an optimized consumption (with 3 states: ON, MUTE, ECO) depending on the VOX control processing.

The mechanical construction based in aluminum to ensure many years of reliable operation in high humidity environments.

The unit can be controlled with the WCD-3000, which offers real time configuration and save characteristic operation in the internal memory of the ACD-3008 / ACD-3012 column. This is a friendly way to interact and configure in the startup process.

TECHNICAL DATA	ACD-3008	ACD-3012
- Speakers:	8 x 4"	12 x 4"
- Type of speaker:	Kapton Cone (specially for outdoor and humid environments)	
- Type of amplifier:	PWM (Clas D)	
- Rated power	240w.	360w.
- Frequency response	80 Hz - 20.000 Hz	
- SPL Level ( at 30m)	90 dB SPL	91 dB SPL
- Range	>30 meters (*)	>40 meters (*)
- Horizontal dispersion	140°	
- Sound beam angle adjustment	+/- 45 positions (45°)	
- Signal input/output	Balanced / Unbalanced	
- L100v input	Balanced	
- Sensitivity	0 dB / -3 dB / -6 dB	
- Communication protocol with WCD-3000	RS-485 - 9600 baud	
- Maximum Consumption	400w.	650w.
- Consumption (ECO mode)	5w.	
- Consumption (MUTE mode)	30w.	
- Power supply	230 VAC./ 50-60 Hz.	
- Fuse protection:	T3,15A.	T5A.
- Color	Ivory - RAL1015	
- Weight	19 Kg.	27 Kg.
- Dimensions (mm.):	1134 x 150 x 139	1666 x 150 x 139

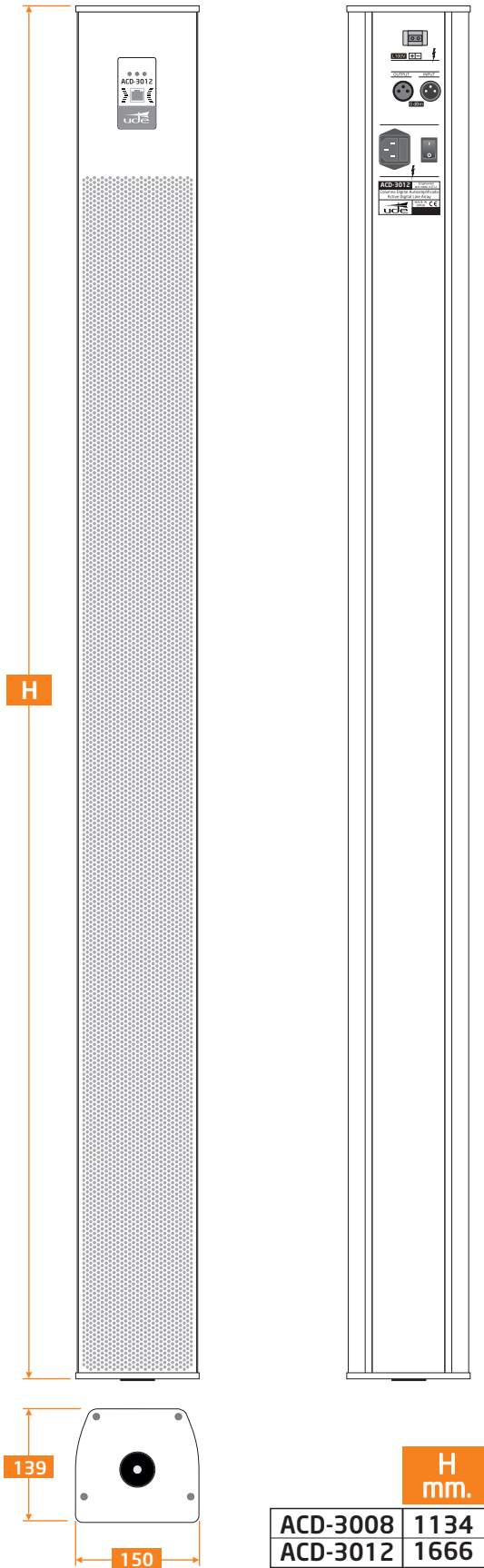
(\*): depending the aiming angle variation selected and the acoustical conditions.



- 1 VOX led indicator (100V and 0dB)
- 2 CONFIG - Programming led indicator (when is linked with a WCD-3000)
- 3 ON - Power led indicator
- 4 RJ-45 socket for WCD-3000 linking.

- 5 Euroblock terminal for L100V audio input.
- 6 Audio line male socket (XLR) - 0dB output.
- 7 Audio line female socket (XLR) - 0dB input.
- 8 230 VAC supply input with built-in fuse holder
- 9 AC Fuse
- 10 Power switch ON/OFF

**DIMENSIONS (mm.)**



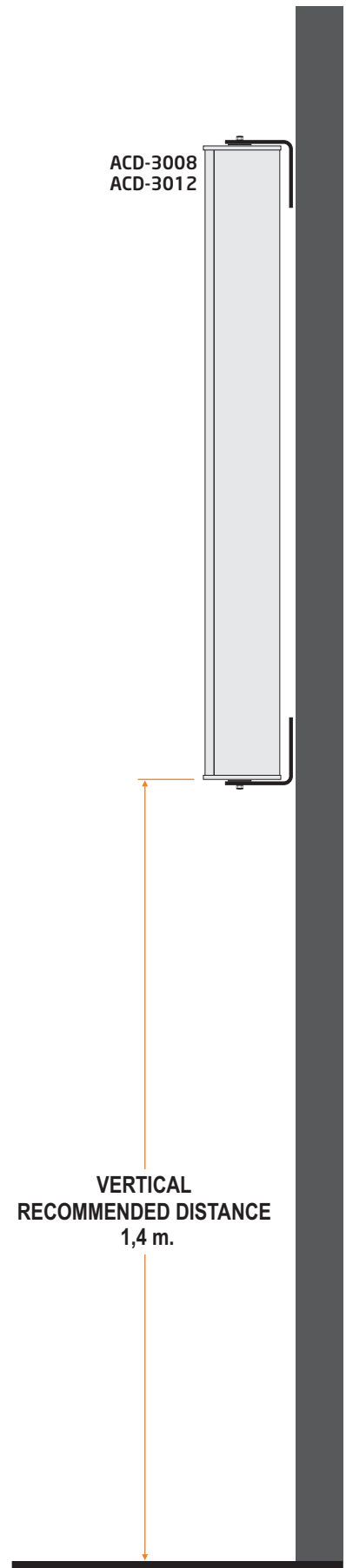
**ACD-3008 & ACCESSORIES**

- 1 Directional array ACD-3008
- 2 Angle brackets
- 2 Fastener set (M8 stainless steel).
- 1 230VAC power cord.

**ACD-3012 & ACCESSORIES**

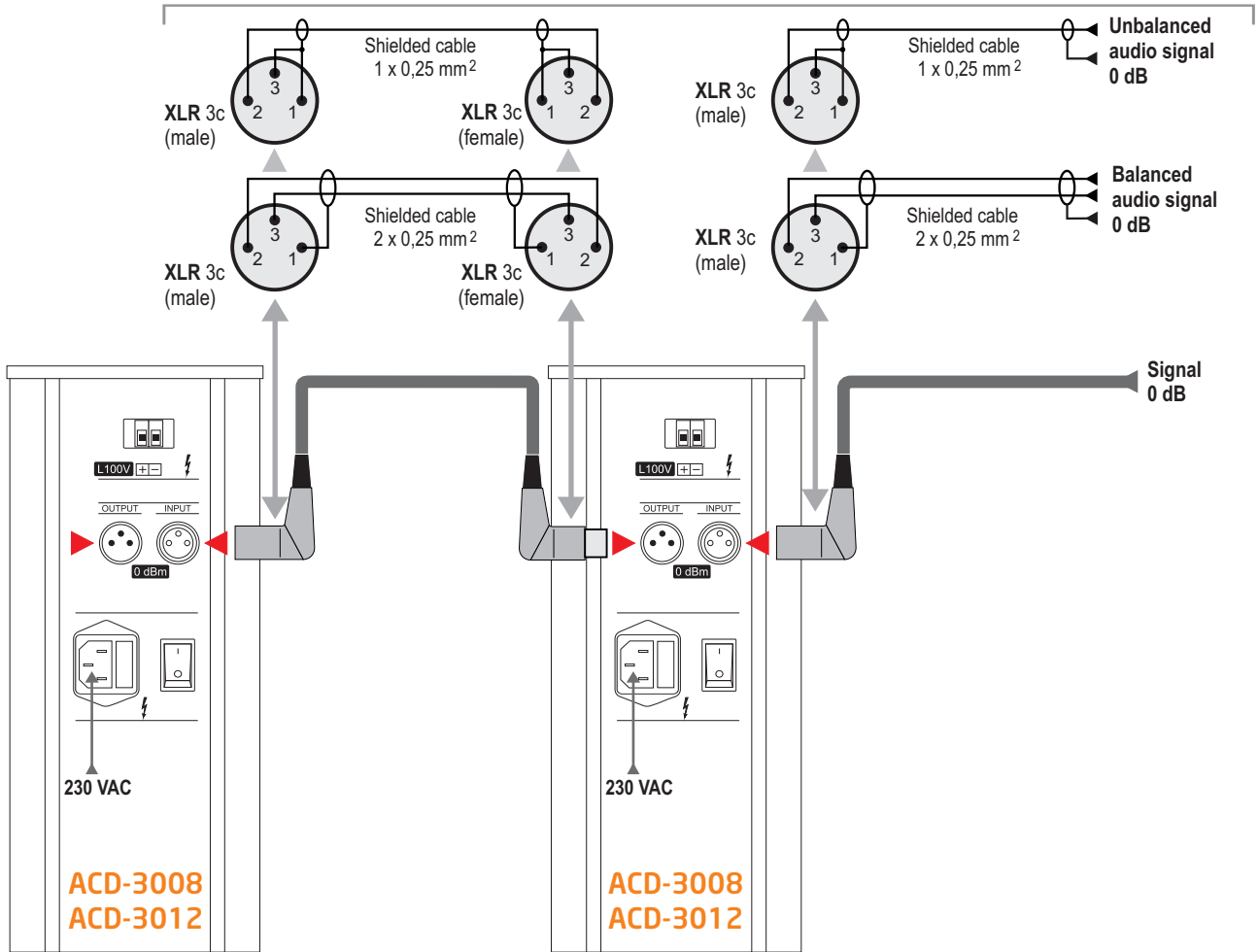
- 1 Directional array ACD-3012
- 2 Angle brackets
- 2 Fastener set (M8 stainless steel).
- 1 230VAC power cord.

**TYPICAL INSTALLATION**

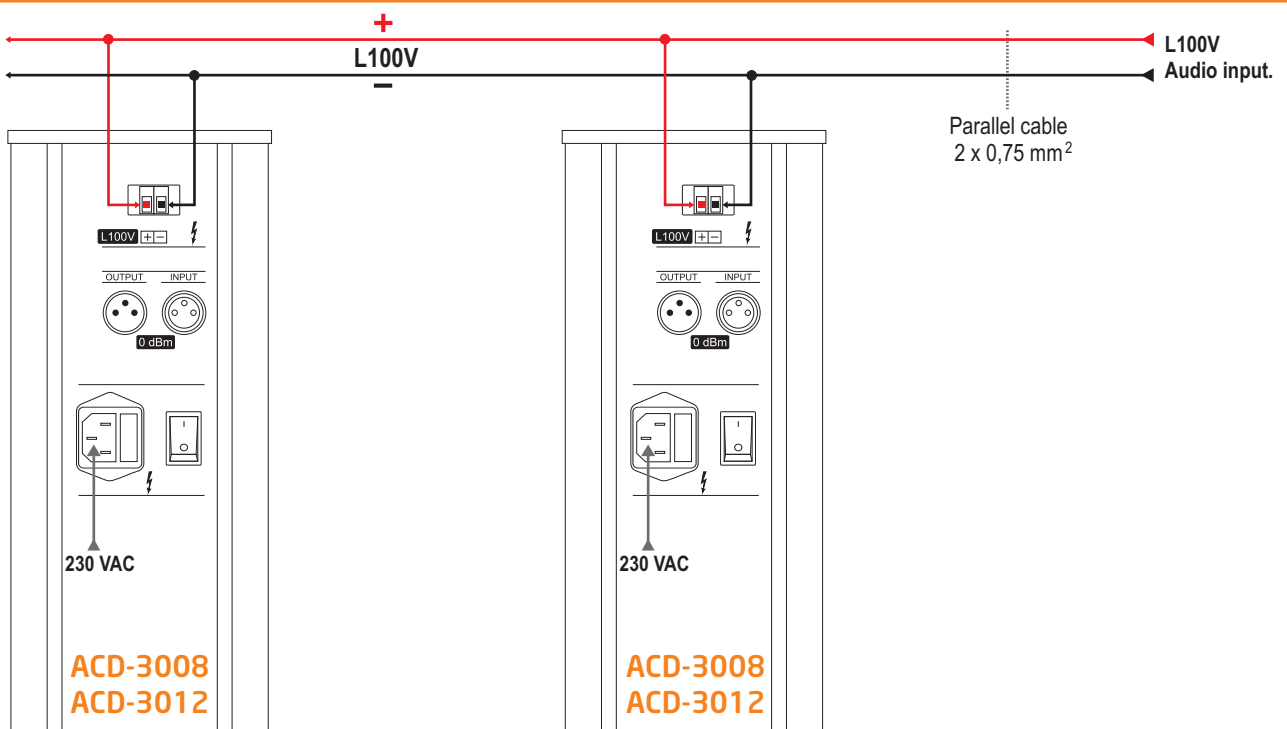


**0dB CONNECTION**

The connections draw is on the solder side of the connectors.

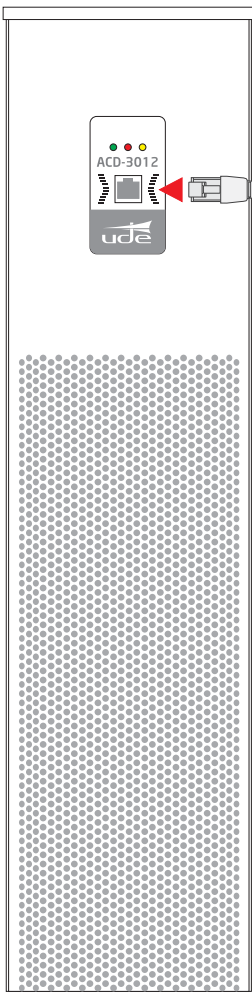


**L100V CONNECTION**



**WCD-3000 CONNECTION**

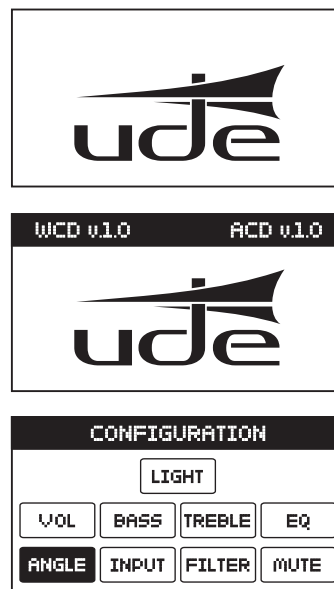
Once the audio signal and the power supply is connected to the ACD-3008 / ACD-3012, it is recommended to configure with the **WCD-3000 Programmer**.



- 1 Plug the wire in the WCD-3000 and the control socket in the front of the ACD-3008/ACD-3012 line array with a UTP CAT5 wire supplied.



- 2 Initially a UDE logo will be displayed with the WCD-3000 and column (ACD) firmware version. After a communication check and data transfer the CONFIGURATION menu will appear.



When the communication is ready, information led light will keep on and the user is ready to configure all options.

BLOCK DIAGRAM

